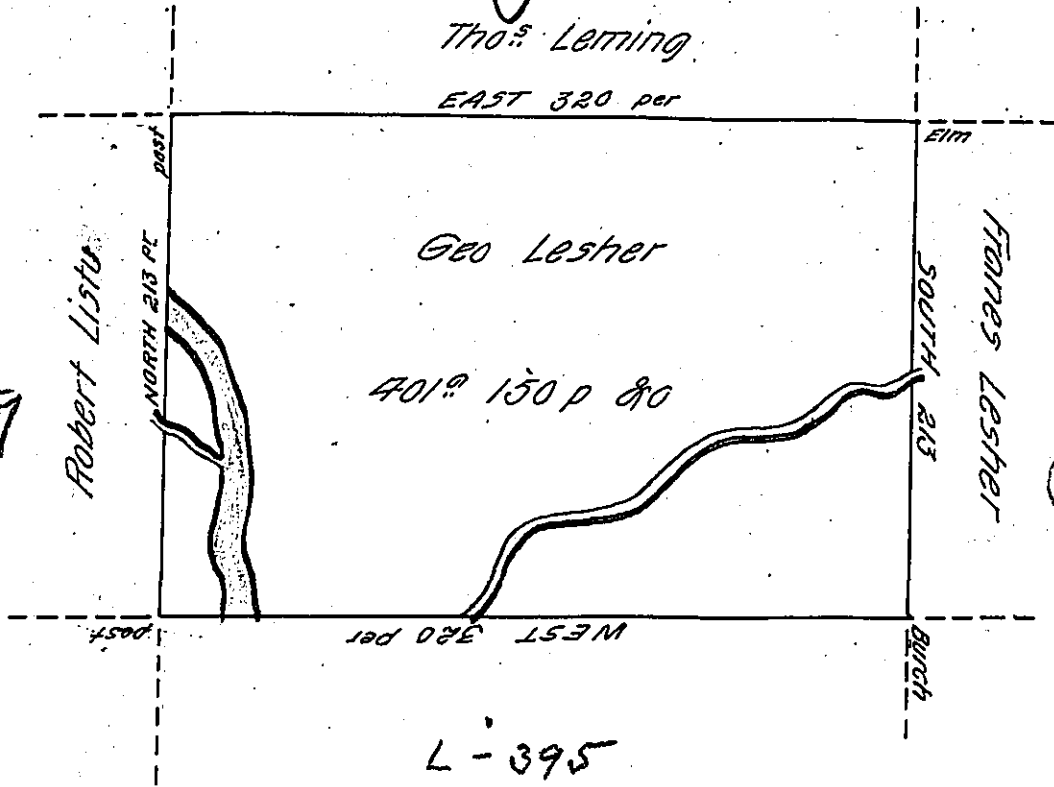


Page 83

Thos Leming  
EAST 320 per



C. 189. 287

Page 83

L-395

Situate on the west side of French Creek in Allegheny County  
 Containing 401 acres & 150 perches & allowance of six P cent for roads  
 &c. Surveyed the 30<sup>th</sup> day of May 1795 in pursuance of a warrant  
 dated the 30<sup>th</sup> day of May 1792

To Daniel Brodhead Esq<sup>r</sup> }  
 Surveyor General

W<sup>m</sup> Power D<sup>y</sup> S<sup>r</sup>

IN TESTIMONY that the above is a copy of the original remaining on file in  
 the Department of Internal Affairs of Pennsylvania, made  
 conformably to an Act of Assembly approved the 16th day of  
 February, 1833, I have hereunto set my Hand and caused  
 the Seal of said Department to be affixed at Harrisburg,  
 this fifteenth day of September 1905

*Loach P. Brown*  
 Secretary of Internal Affairs.